



Gobi2000 Driver and OneClickInternet Connection Manager

Release Notes & Installation Instructions

© 2010 Sierra Wireless, Inc.

This document contains information which is proprietary and confidential to Sierra Wireless, Inc. Disclosure to persons other than the officers, employees, agents, or subcontractors of the Company or licensee of this document without the prior written permission of Sierra Wireless, Inc. is strictly prohibited.

Release Notes	Gobi2000 72-VR322-11 1.1.140 & OneClickInternet Build 20100521 v1.8	Page 2 of 12
---------------	--	--------------

Table of Contents

1	General	4
1.1	<i>Purpose.....</i>	4
1.2	<i>Scope.....</i>	4
2	Download Gobi2000 driver and OneClickInternet CM	5
2.1	<i>Download the necessary installation files.....</i>	5
2.2	<i>Windows One-Click Tools.....</i>	5
2.3	<i>Gobi2000 Driver Installation</i>	5
2.4	<i>OneClick Internet (WebToGo) CM Installation</i>	7
3	Revision History	9
3.1	<i>Driver Gobi2000 72-VR322-11_1.1.140 / OneClickInternet Build 20100521 Rel 1.8 .</i>	9
3.1.1	<i>Driver Gobi2000 72-VR322-11_1.1.140</i>	9
3.1.2	<i>OneClickInternet CM Changes/New Features Rel v1.8</i>	9
3.2	<i>Driver Gobi2000 72-VR322-8_1.1.90 / OneClickInternet Build 20100310 Rel 1.7</i>	9
3.2.1	<i>Driver Gobi2000 72-VR322-8_1.1.90</i>	9
3.2.2	<i>OneClickInternet CM Changes/New Features Rel v1.7</i>	9
3.3	<i>Driver Gobi2000 72-VR322-8_1.1.90 / OneClickInternet ver3.0 Build 20100127 Rel 1.6.....</i>	9
3.3.1	<i>Driver Gobi2000 72-VR322-8_1.1.90</i>	10
3.3.2	<i>OneClickInternet CM Changes/New Features Rel v1.6 (note: this release is still tagged with v1.6 but the build number is different)</i>	10
3.4	<i>Driver Gobi2000 72-VR322-8_1.1.90 / OneClickInternet ver3.0 Build 20100112 Rel 1.6.....</i>	10
3.4.1	<i>Driver Gobi2000 72-VR322-8_1.1.90</i>	10
3.4.2	<i>OneClickInternet CM Changes/New Features Rel v1.6</i>	10
3.5	<i>Driver Gobi2000 72-VR322-4_1.1.18 / OneClick Internet ver3.0 Build 2009100923 Rel 1.3.....</i>	10
3.5.1	<i>Driver Gobi2000 72-VR322-4_1.1.18</i>	10
3.5.2	<i>OneClick Internet CM Changes/New Features Rel v1.3</i>	10
3.6	<i>Driver Gobi2000 72-VR322-4_1.1.18 / OneClick Internet ver3.0 Build 20091009180047 Rel 1.2</i>	10
3.6.1	<i>Driver Gobi2000 72-VR322-4_1.1.18</i>	10
3.6.2	<i>OneClick Internet CM Changes/New Fetures Rel v1.2</i>	11
3.7	<i>Driver Gobi2000 72-VR322-2_1.1.10 / OneClick Internet ver3.0 Build 20090915182924 Rel 1.1</i>	11
3.7.1	<i>OneClick Internet CM New Features</i>	11

SIERRA WIRELESS, INC.

Release Notes	Gobi2000 72-VR322-11 1.1.140 & OneClickInternet Build 20100521 v1.8	Page 3 of 12
---------------	--	--------------

3.8	<i>Driver Gobi2000 72-VM517-6_1.0.06 / OneClick Internet ver3.0 Build 20090507172742</i>	<i>11</i>
4	Known Issues.....	12
4.1	<i>OneClickInternet</i>	<i>12</i>

Release Notes	Gobi2000 72-VR322-11 1.1.140 & OneClickInternet Build 20100521 v1.8	Page 4 of 12
---------------	--	--------------

1 General

1.1 Purpose

This document is intended to detail the installation instructions of Gobi2000 driver and OneClick Internet (WebToGo) Connection Manager.

These release notes are NOT intended for the end user.

A new revision of this document will be issued when any of the Gobi driver or Connection Manager is updated.

1.2 Scope

This document covers issues that affect carriers and end users.

Release Notes	Gobi2000 72-VR322-11 1.1.140 & OneClickInternet Build 20100521 v1.8	Page 5 of 12
---------------	--	--------------

2 Download Gobi2000 driver and OneClickInternet CM

2.1 Download the necessary installation files

Download the files and follow any additional instructions from the Gobi2000 SharePoint website:

From: (to be announced)

Please contact your Sierra Wireless representative for access information.

One-Click Tools are supplied in EXE format and are meant to run on Windows platforms such as on a PC. The following table summarizes the files to use.

	One-Click Tools
Gobi2000 driver	Qualcomm – Gobi\72-VR322-11 - Sierra Gobi 1.1.140\Setup.exe
OneClick Internet CM	OneClickInternet_Sierra_20100521_v1.8.exe

2.2 Windows One-Click Tools

Gobi2000 driver and OneClick Internet CM are supported on the following Microsoft Operating Systems:

1. Windows XP SP2 (Service Pack 2) or higher
2. Windows 7
3. Windows Vista

Gobi2000 driver and OneClickInternet CM are provided in a One-Click Tool that contains the binary files within it. Before you start your installation, please ensure the following:

- Please close all active sessions such as Hyper Terminal, etc. that you may have open, debug logging sessions, etc.
- Please ensure that your modem (in case of using a devkit) is powered and operating normally

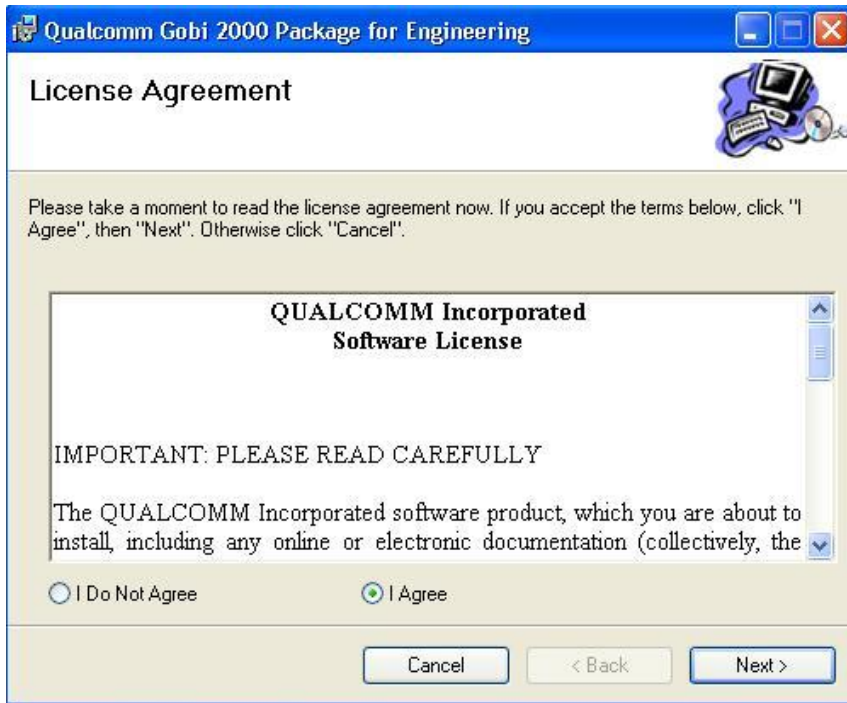
2.3 Gobi2000 Driver Installation

To proceed with the driver installation, please follow the next steps:

XP, VISTA, WIN7 Installation: Locate and Click on the Gobi2000 driver One-Click Tool executable ([Setup.exe](#)) to start the installation process

Release Notes	Gobi2000 72-VR322-11 1.1.140 & OneClickInternet Build 20100521 v1.8	Page 6 of 12
---------------	--	--------------

1. Carefully read the License Agreement. If you agree to the terms click on the "I Agree" button.



2. To install driver click on "Next" button.

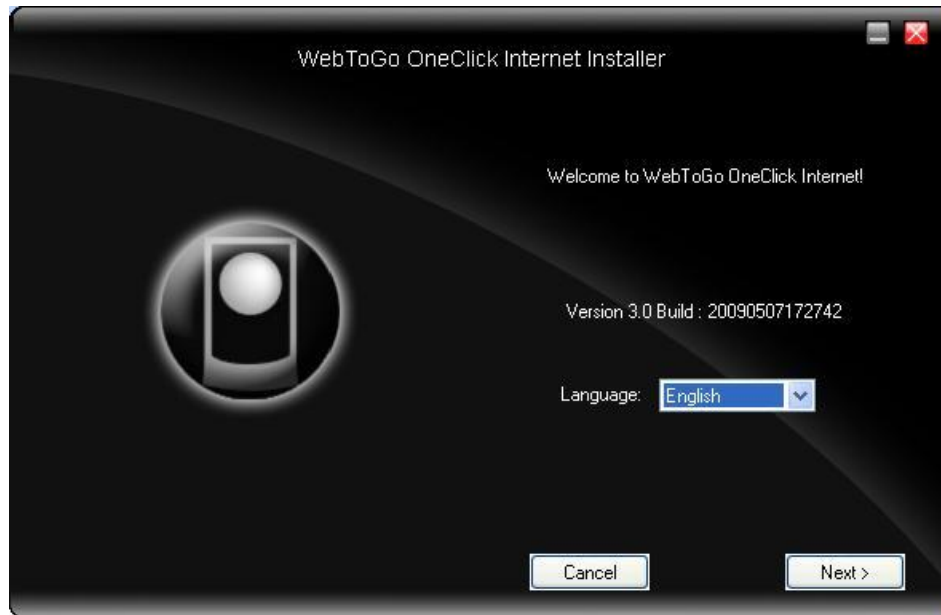


Release Notes	Gobi2000 72-VR322-11 1.1.140 & OneClickInternet Build 20100521 v1.8	Page 7 of 12
---------------	--	--------------

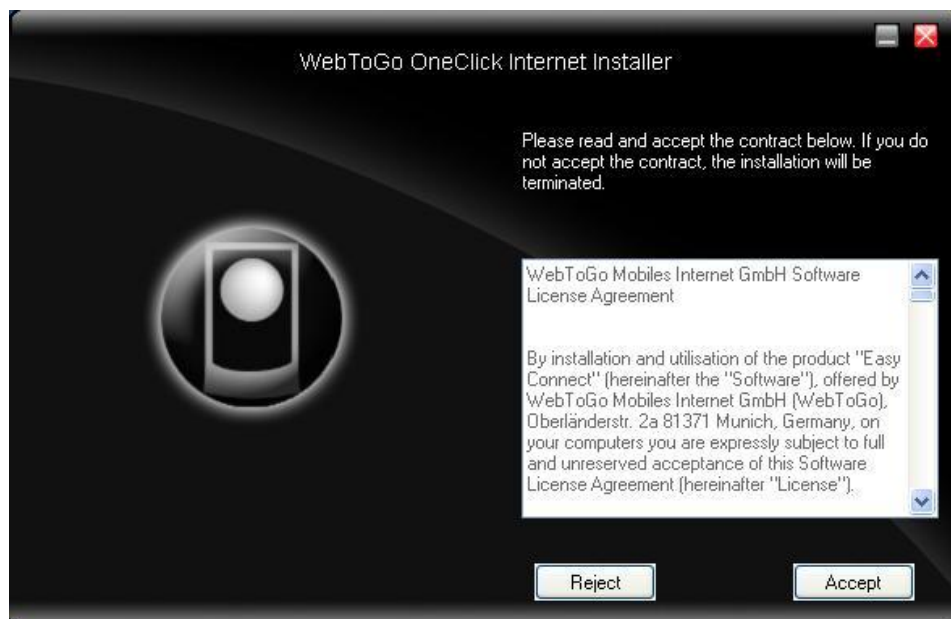
3. You will be prompted when the installation completes. Click on “Close” button to finish installation.

2.4 OneClick Internet (WebToGo) CM Installation

1. Locate and Click on [OneClickInternet_Sierra_20100521_v1.8](#) Select your language preference and click on “Next”



2. Please read the License agreement. If you agree to the terms click on “Accept” Button



Release Notes	Gobi2000 72-VR322-11 1.1.140 & OneClickInternet Build 20100521 v1.8	Page 8 of 12
---------------	--	--------------

3. Select Installation directory and click on "Install" button



4. To complete the installation Click on "Finish" button



Release Notes	Gobi2000 72-VR322-11 1.1.140 & OneClickInternet Build 20100521 v1.8	Page 9 of 12
---------------	--	--------------

3 Revision History

3.1 Driver Gobi2000 72-VR322-11_1.1.140 / OneClickInternet Build 20100521 Rel 1.8

Release 2010 May 21

3.1.1 *Driver Gobi2000 72-VR322-11_1.1.140*

Please see driver Release Notes for driver related fixes.

3.1.2 *OneClickInternet CM Changes/New Features Rel v1.8*

CDMA SMS is fully implemented
 Support for Bell/Telus APN
 Added CDMA PRL/MDN display
 Fixed initialization issue after suspend/resume
 CDMA status is showing the correct bearer technology
 Improvements on network strength report
 MSISDN display is no longer blocked when SIM PIN is enabled
 Win7 IE proxy is not deleted anymore by CM
 Network tab is no longer blocked when CDMA module is not activated

3.2 Driver Gobi2000 72-VR322-8_1.1.90 / OneClickInternet Build 20100310 Rel 1.7

Release 2010 March 10

3.2.1 *Driver Gobi2000 72-VR322-8_1.1.90*

Please see driver Release Notes for driver related fixes.
 Do not use the latest Gobi QCOM driver v1.1.120.
 V1.1.120 driver will crash WIN7 during image switch.

3.2.2 *OneClickInternet CM Changes/New Features Rel v1.7*

On some platforms OneClickInternet was blocking OS suspend cycle when the HW radio off button was activated.
 MEID was showing "not available"
 ESN field is showing the correct value now
 Inconsistent UI defect when entering long PIN issue is fixed now
 On some platforms when autolaunch & autoconnect were both enabled it was not possible to disconnect
 On certain platforms users were unable to connect to AT&T even though the APN was correct

3.3 Driver Gobi2000 72-VR322-8_1.1.90 / OneClickInternet ver3.0 Build 20100127 Rel 1.6

Release 2010 January 27

Release Notes	Gobi2000 72-VR322-11 1.1.140 & OneClickInternet Build 20100521 v1.8	Page 10 of 12
---------------	--	---------------

3.3.1 Driver Gobi2000 72-VR322-8_1.1.90

Please see driver Release Notes for driver related fixes.

3.3.2 OneClickInternet CM Changes/New Features Rel v1.6 (note: this release is still tagged with v1.6 but the build number is different)

Added Gobi2000 FW version to info tab

3.4 Driver Gobi2000 72-VR322-8_1.1.90 / OneClickInternet ver3.0 Build 20100112 Rel 1.6

Release 2010 January 12

3.4.1 Driver Gobi2000 72-VR322-8_1.1.90

Please see driver Release Notes for driver related fixes.

3.4.2 OneClickInternet CM Changes/New Features Rel v1.6

FW version is picked automatically based on SIM
Autolaunch feature has been added
Fixed radio on/off button and HW radio on/off sync issue
After resuming from S4 OneClick fails to initialize unless a key is pressed
Fixed installation issue where no previous version of WTG was installed
Fixed crash when user clicked on WTG task tray icon while in edit profile mode

3.5 Driver Gobi2000 72-VR322-4_1.1.18 / OneClick Internet ver3.0 Build 2009100923 Rel 1.3

Release 2009 October 23

3.5.1 Driver Gobi2000 72-VR322-4_1.1.18

Note: There is no Gobi driver change with OneClick Internet v1.3

3.5.2 OneClick Internet CM Changes/New Features Rel v1.3

New autoconnect logic implemented
"PIN" window is not active
GPS button is disabled after turning off/on Radio switch
Cannot disable GPS button in config.ini
Roger's SIM doesn't auto populate profile

3.6 Driver Gobi2000 72-VR322-4_1.1.18 / OneClick Internet ver3.0 Build 20091009180047 Rel 1.2

Release 2009 October 9

3.6.1 Driver Gobi2000 72-VR322-4_1.1.18

USB Composite Driver Updates

Release Notes	Gobi2000 72-VR322-11 1.1.140 & OneClickInternet Build 20100521 v1.8	Page 11 of 12
---------------	--	---------------

Network Driver Updates
Filter Driver Improvements

3.6.2 OneClick Internet CM Changes/New Fetures Rel v1.2

Fixed problems with repeated GPS tracking
Fixed problems of Radio Status and Radio Switch functionality
APN profile can be edited now
APN list has been updated for AT&T, Sunday-Vodafone, NTT DoCoMo
Improved status messages of PIN Management
Fixed error entries in Windows 7 event log

3.7 Driver Gobi2000 72-VR322-2_1.1.10 / OneClick Internet ver3.0 Build 20090915182924 Rel 1.1

Release 2009 September 15

3.7.1 OneClick Internet CM New Features

Carrier Image Change option
CDMA Support
GPS Support
Radio Off

3.8 Driver Gobi2000 72-VM517-6_1.0.06 / OneClick Internet ver3.0 Build 20090507172742

Initial release 2009 May 5

Release Notes	Gobi2000 72-VR322-11 1.1.140 & OneClickInternet Build 20100521 v1.8	Page 12 of 12
---------------	--	---------------

4 Known Issues

Below is a list of known issues for this release.

4.1 OneClickInternet

- Cosmetic issues on 120DPI resolution
- Static DNS settings are ignored
- PS only SIM registration issues on Docomo network